



TRANSPORTATION CABINET

Frankfort, Kentucky 40622
www.transportation.ky.gov/

Steven L. Beshear
Governor

Michael W. Hancock, P.E.
Secretary

August 12, 2011

CALL NO. 307
CONTRACT ID NO. 112978
ADDENDUM # 1

Subject: Henry County, FE02 051 0071 B00051L
Letting August 19, 2011

- (1) Revised - Table of Contents - Page 2 of 54
- (2) Added - Special Notes Applicable to Project - Pages 8(a)-8(c) of 54

Proposal revisions are available at <http://transportation.ky.gov/contract/>.

If you have any questions, please contact us at 502-564-3500.

Sincerely,

A handwritten signature in blue ink that reads "Ryan Griffith".

Ryan Griffith
Director
Division of Construction Procurement

RG:ks
Enclosures



An Equal Opportunity Employer M/F/D

TABLE OF CONTENTS

PART I	SCOPE OF WORK
	<ul style="list-style-type: none">• PROJECT(S), COMPLETION DATE(S), & LIQUIDATED DAMAGES• CONTRACT NOTES• STATE CONTRACT NOTES• EXPEDITE WORK ORDER• SPECIAL NOTE(S) APPLICABLE TO PROJECT• LIQUIDATED DAMAGES• TRAFFIC CONTROL PLAN• SKETCH MAP(S)• PRE-BID CONFERENCE
PART II	SPECIFICATIONS AND STANDARD DRAWINGS
	<ul style="list-style-type: none">• SPECIFICATIONS REFERENCE• SUPPLEMENTAL SPECIFICATIONS• STANDARD DRAWINGS THAT APPLY
PART III	EMPLOYMENT, WAGE AND RECORD REQUIREMENTS
	<ul style="list-style-type: none">• LABOR AND WAGE REQUIREMENTS• EXECUTIVE BRANCH CODE OF ETHICS• KENTUCKY EQUAL EMPLOYMENT OPPORTUNITY ACT OF 1978• PROJECT WAGE RATES
PART IV	INSURANCE
PART V	BID ITEMS

I-71 over White Sulpher Fork in Henry County

Addendum to CID 112978

This note is issued to clarify a few of the concerns expressed during pre-bid conference on August 9, 2011.

- The Note stated on sheet 2 of the drawing is further expanded as:

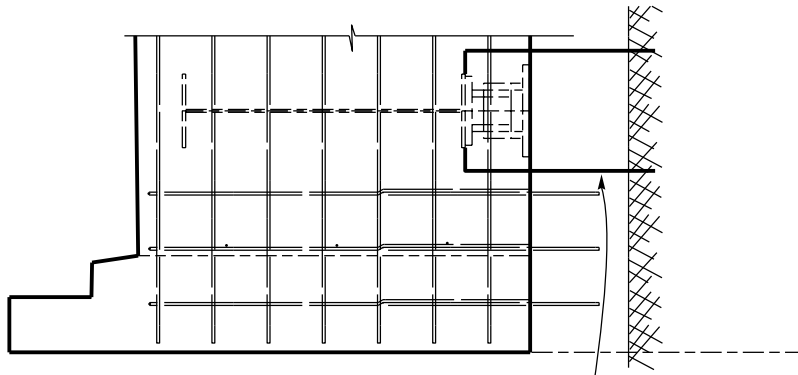
Note: Remove crosshatched portion of existing End Bent and Slab. Clean and expose existing reinforcement. Roughen all contact surfaces. Blast clean all surfaces to come in contact with new concrete to remove all loose/rusted material prior to concrete placement. Blast cleaning shall not be interpreted to include complete removal of paint and rust from metal elements to expose bear metal. Residual lead paint may still exists on this bridge. Therefore the Contractor is advised to take all necessary protective measures including worker safety and environmental regulations when performing surface preparation. The Department will not consider any claims based on residual lead paint.

- The Elevation, Plan and section through end bent drawings shown on sheet 3 require:

Holes are to be drilled to accommodate the placement of A4 & A3 bars. The holes are not to have a tolerance of greater than 1/16" . The bill of reinforcement is also adjusted to show the correct number of A4/A3 bars.

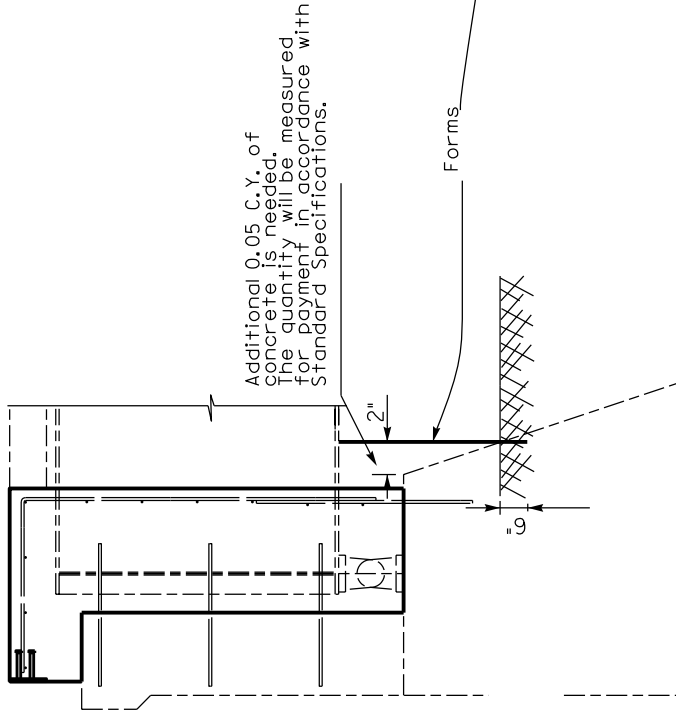
- Temporary fixes:

The temporary neoprene bearing pads and blacks are to remain intact. The Contractor shall make adjustment to the forms to make sure a minimum of 2" of cover are provided for the blocks located at the edge of bearing seat on the north end of the bridge as shown on the attached sketches.

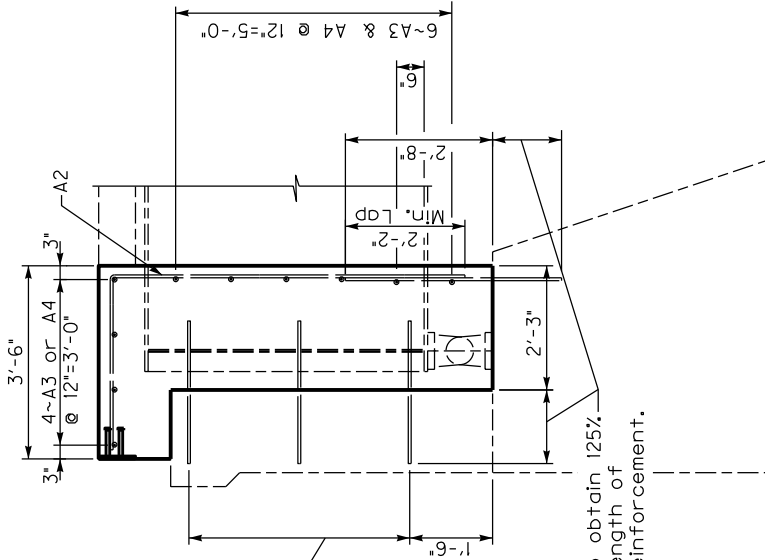


ELEVATION

North end concrete form configuration to provide cover for "temporary blocks"



SECTION THROUGH END BENT



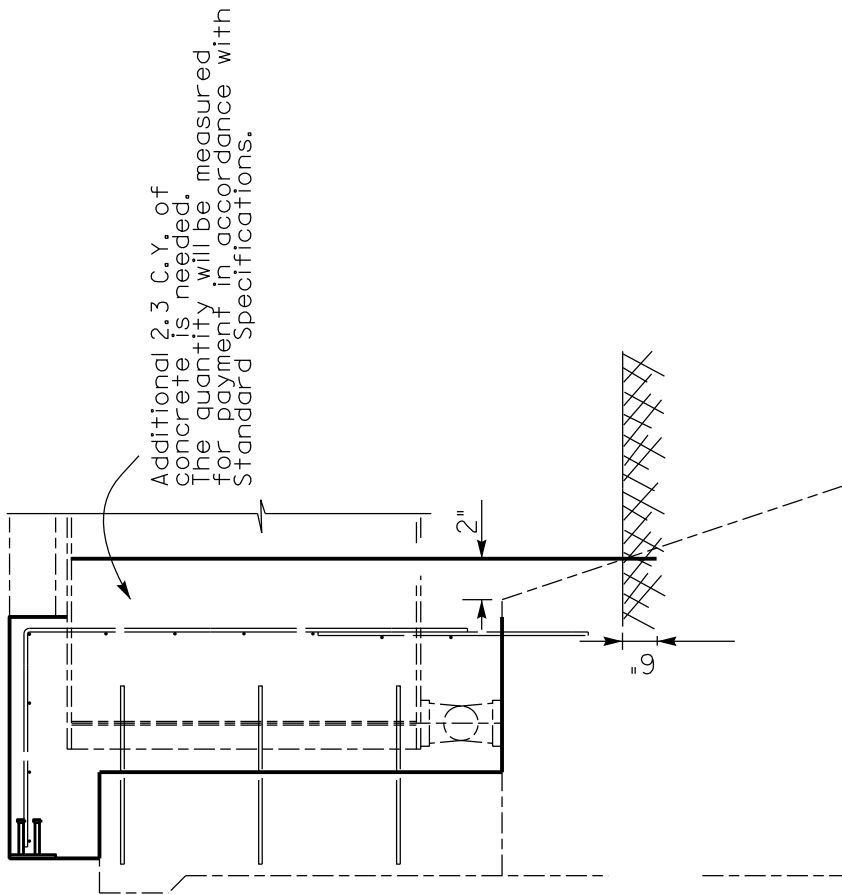
SECTION THROUGH END BENT

42~A5 @ 2'-0"=4'-0" (14 Each Space see elevation for spacing across end wall)

Drill and grout to obtain 125% of the yield strength of grade 60 steel reinforcement.

MARK	TYPE	NO.	SIZE	LENGTH
A3e	Str.	10	5	17'-8
A4e	Str.	10	5	17'-8

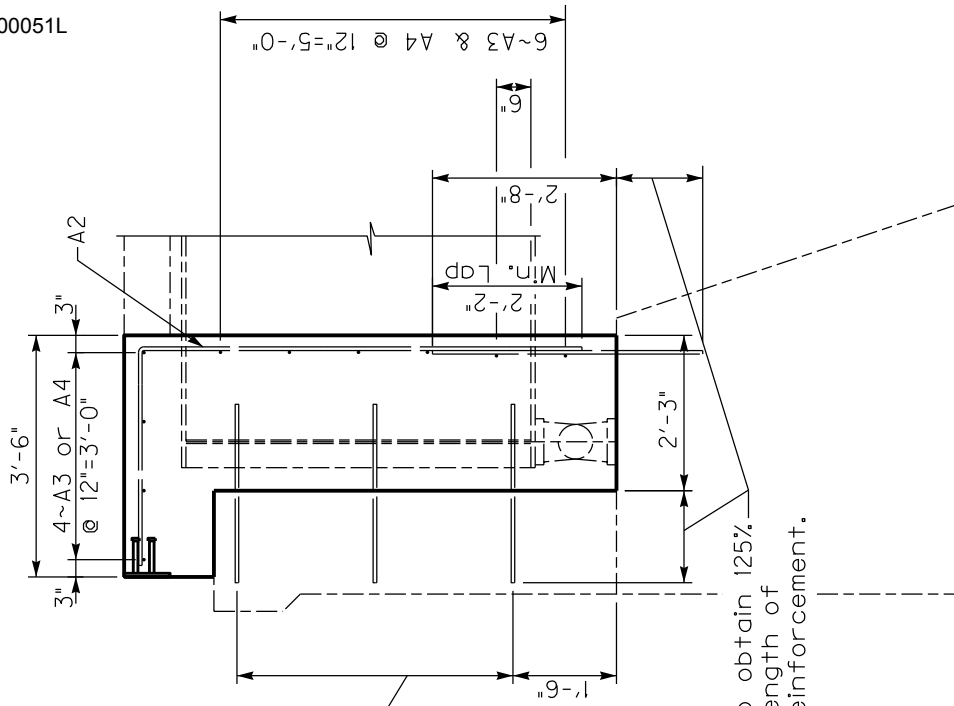
North end concrete form configuration (Option 2)



42~A5 @ 2'-0"=4'-0"
(14 Each Space see elevation for spacing across end wall)

Drill and grout to obtain 125% of the Yield strength of grade 60 steel reinforcement.

**SECTION THROUGH
END BENT**



**SECTION THROUGH
END BENT**

MARK	TYPE	NO.	SIZE	LENGTH
A3e	Str.	10	5	17- 8
A4e	Str.	10	5	17- 8